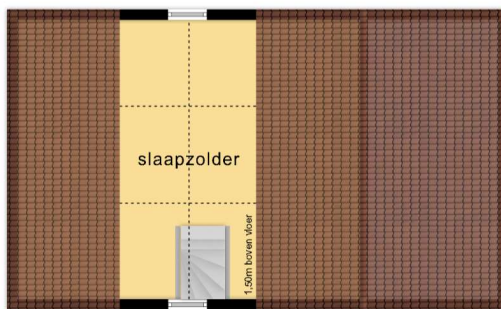
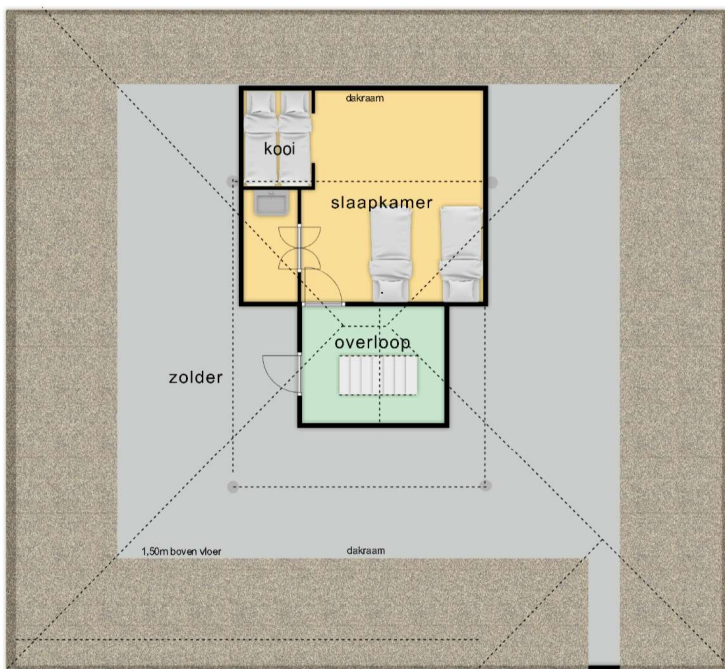
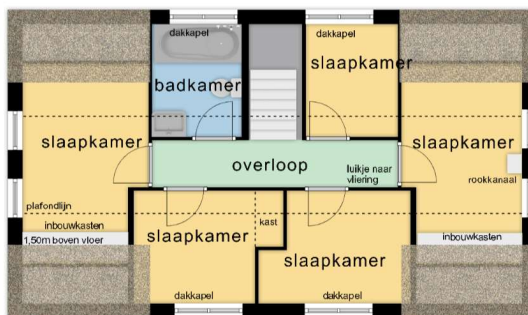


Begane grond



Verdieping

← 7.06 m → ← 2.75 m → ← 2.60 m → ← 1.85 m → ← 1.10 m → ← 1.90 m → ← 2.49 m → 0.75 m



0.75 m .03 m → 2.05 m → 1.03 m .75 m

0.75 m .03 m → 2.05 m → 1.03 m .75 m

5.76 m

23.92 m

5.75 m

2.64 m

5.01 m

← 3.53 m → ← 3.53 m → ← 2.75 m →

← 4.30 m → ← 5.20 m → ← 5.06 m →

26.30 m

Aanhorigheden

