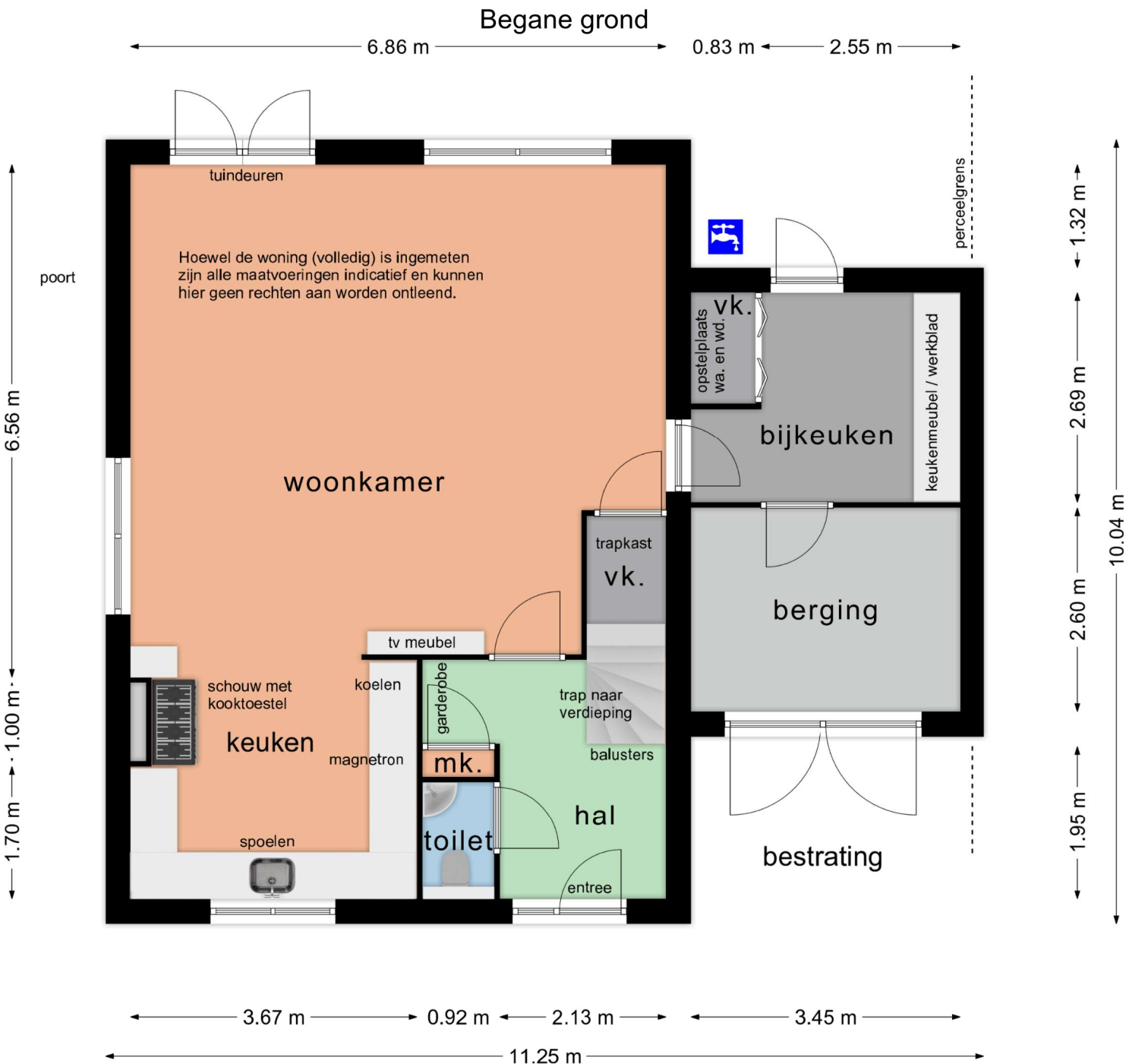
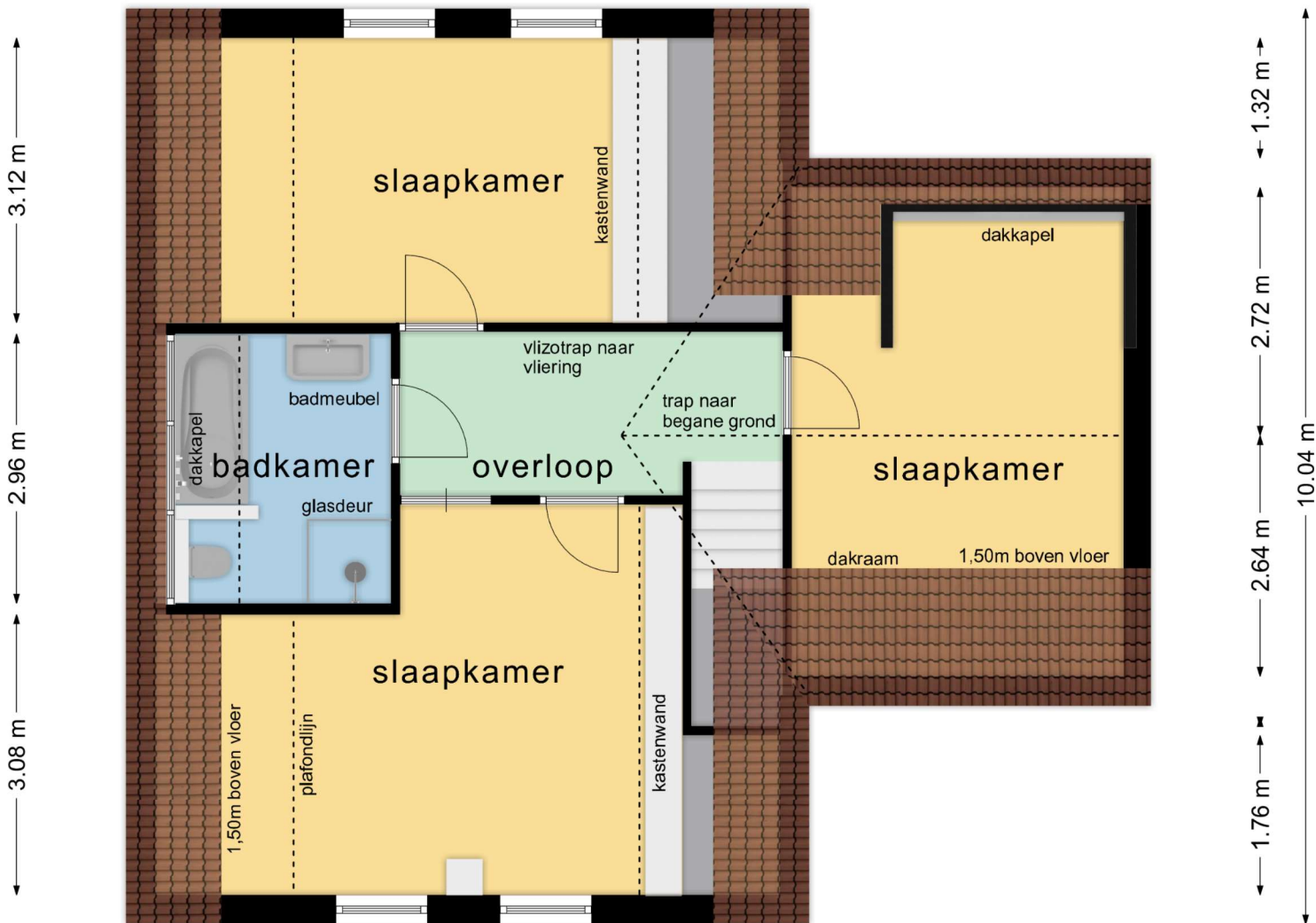


Begane grond



Verdieping

← 1.53 m → ← 3.80 m → ← 1.53 m → ← 3.45 m →

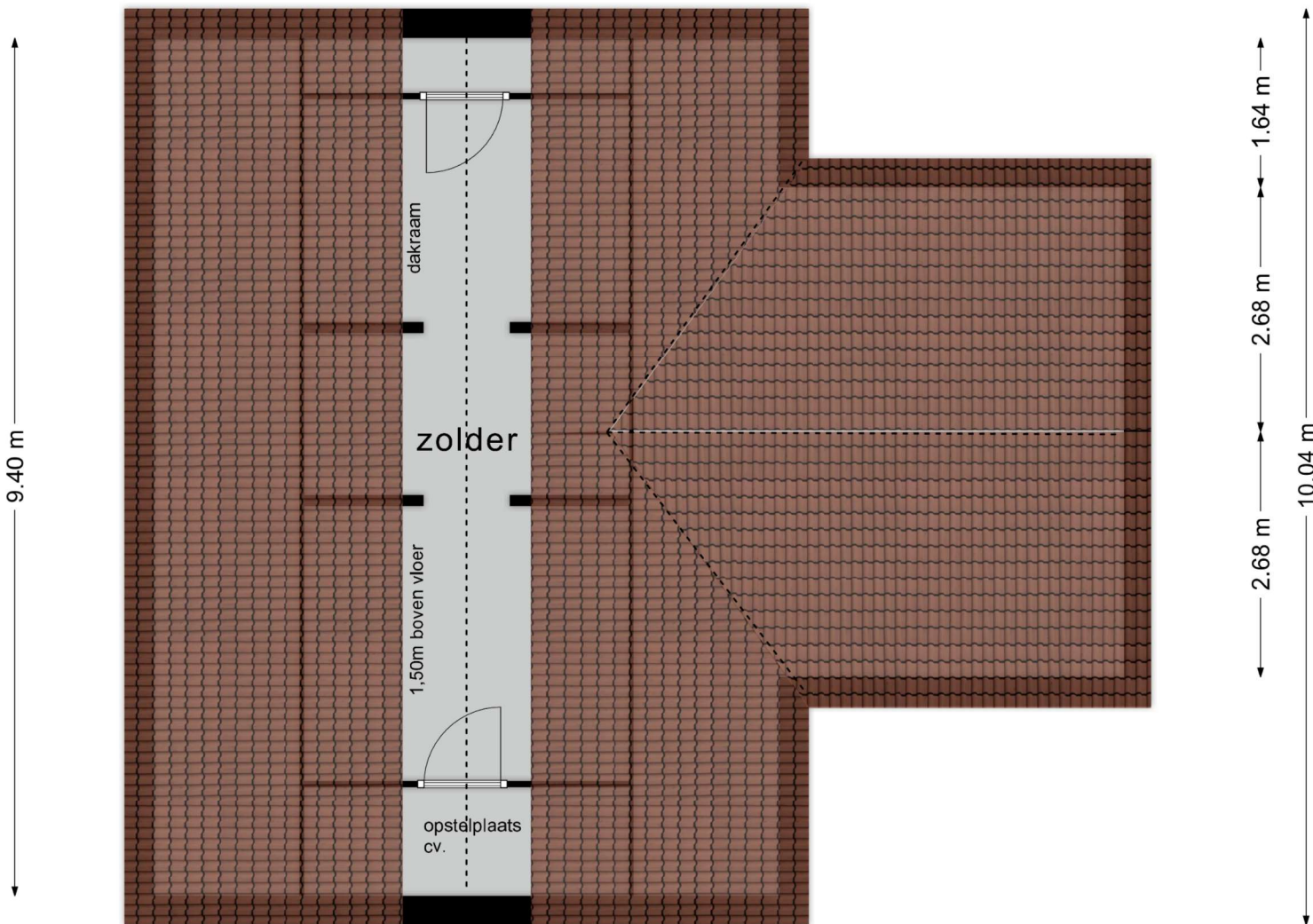


← 1.53 m → ← 2.13 m → ← 1.67 m → ← 1.53 m → ← 3.61 m →

← 11.25 m →

Vliering

← 1.60 m → ← 1.78 m → ← 1.78 m → ← 1.60 m → ← 3.77 m →



← 1.60 m → ← 1.78 m → ← 1.78 m → ← 1.60 m → ← 3.77 m →

← 11.25 m →

