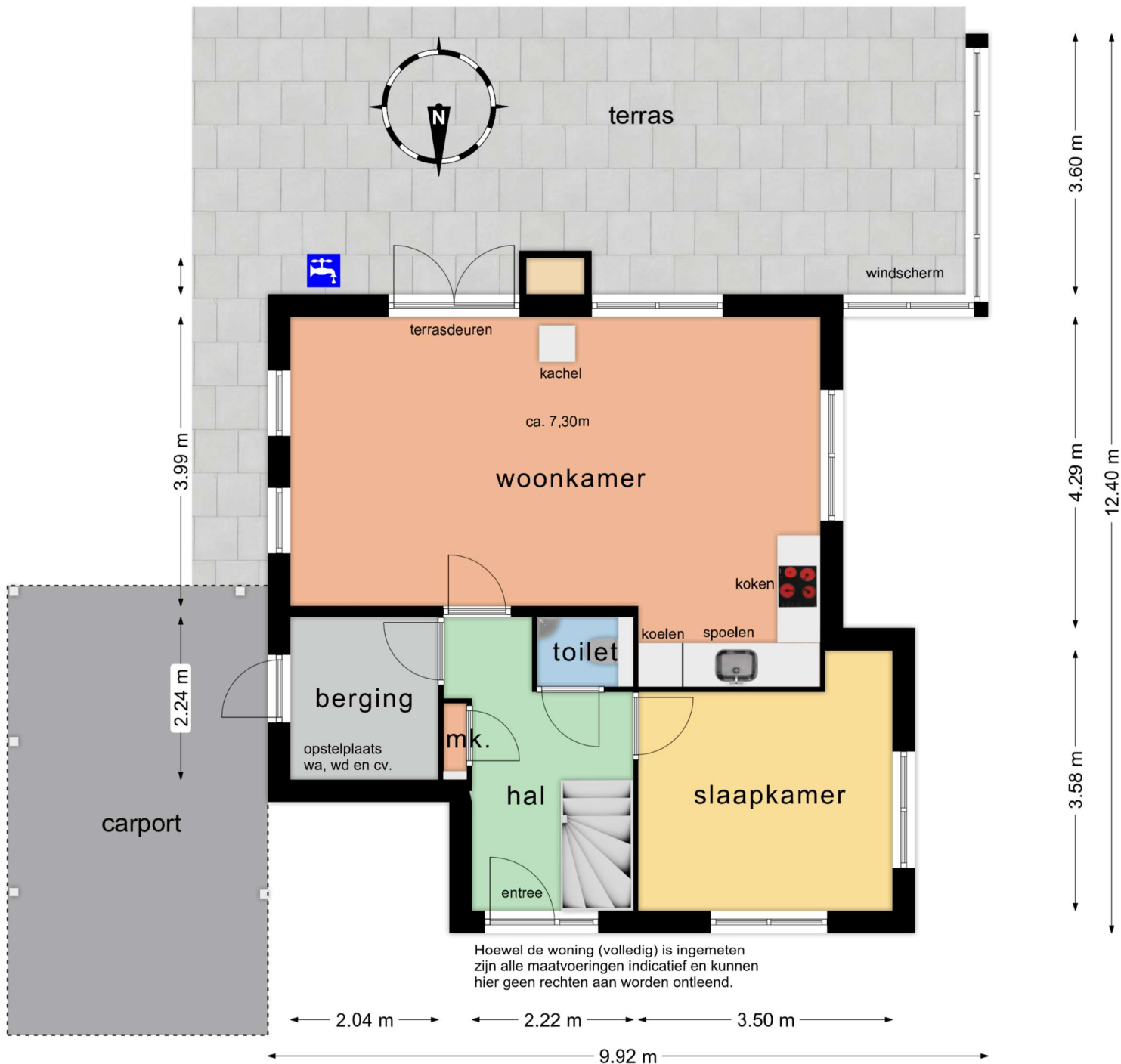


Begane grond

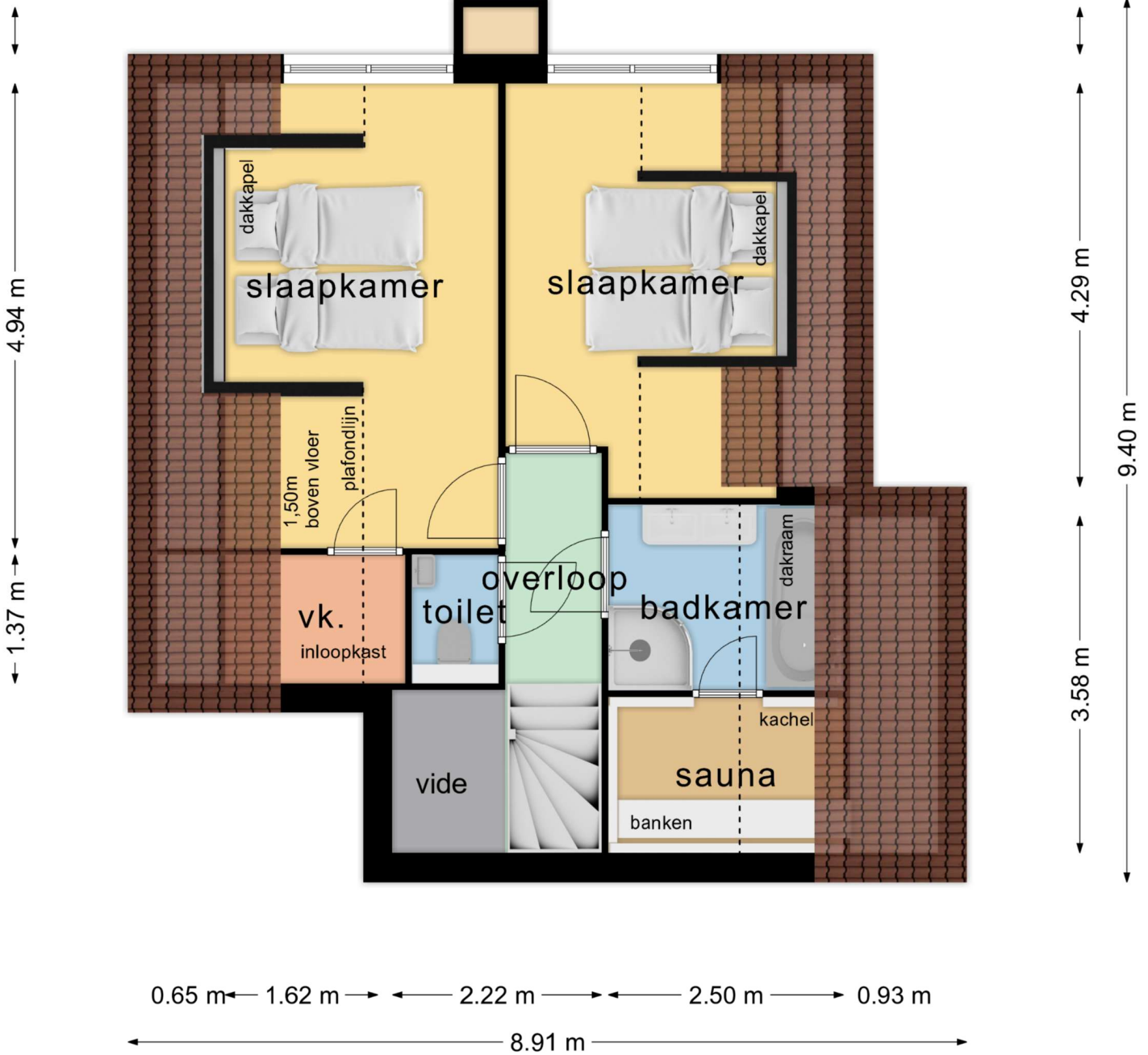
← 3.15 m → 0.80 m ← 2.00 m →



Verdieping

0.65 m ← 2.43 m → 0.80 m

0.65 m 0.68 m



Schuurtje

← 2.74 m →

↑ 1.74 m ↓



↑ 1.74 m ↓

↑ 1.84 m ↓

fietsenbeugels

bestrating

← 2.74 m →

← 2.84 m →