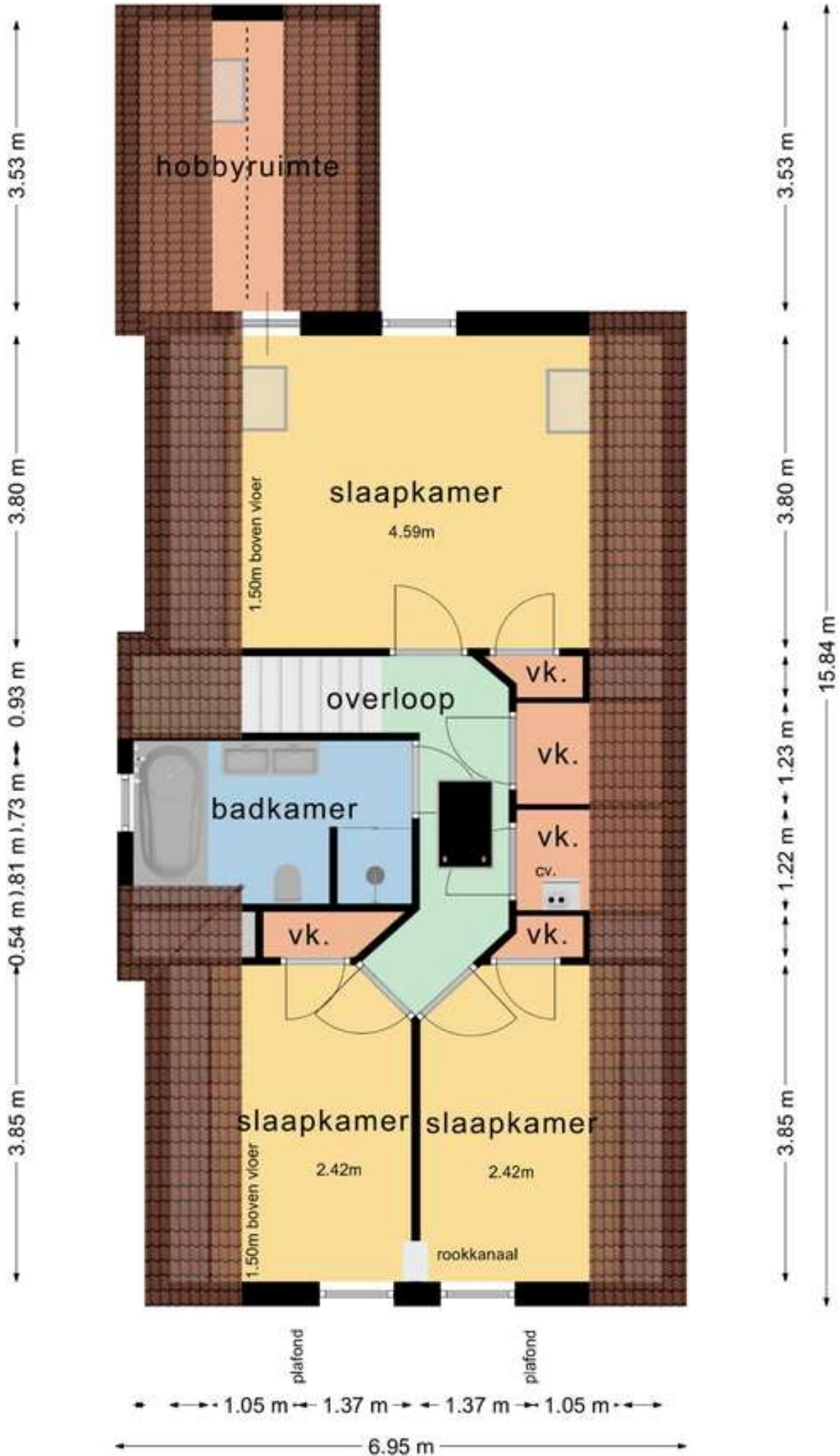
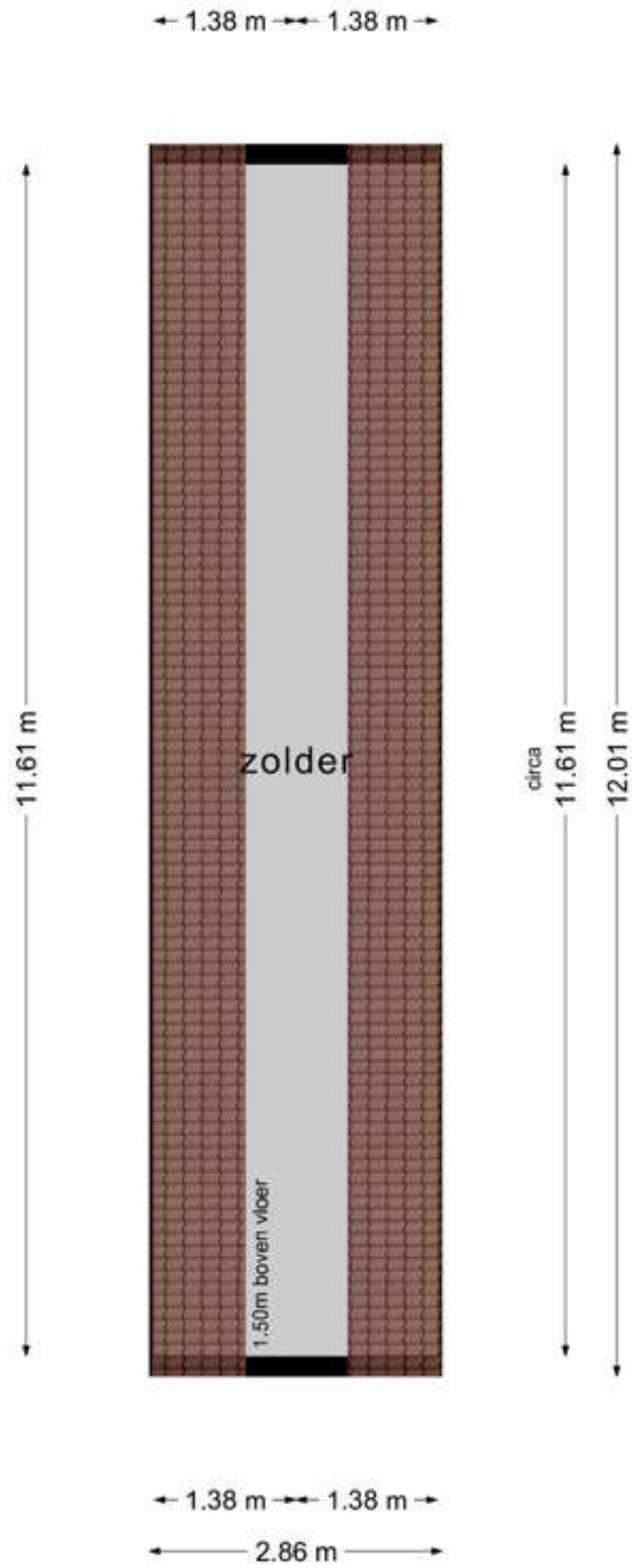


Verdieping

← 1.31 m → 1.32 m → ← 2.01 m → 0.87 m 0.65 m



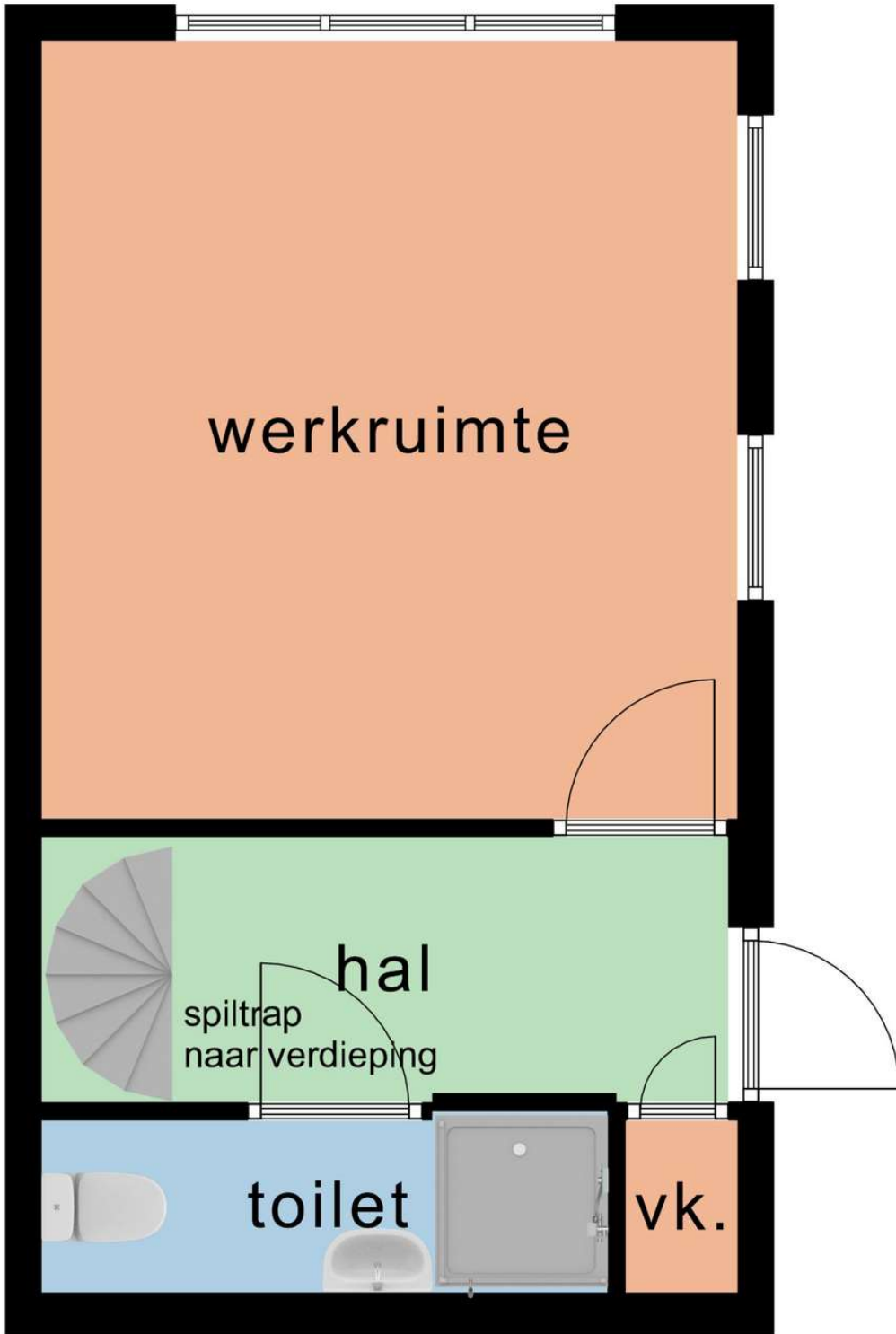
Zolder



BG Bijgebouw
3.80 m



4.25 m
1.45 m
0.94 m



4.25 m
1.45 m
0.94 m
7.29 m

3.09 m 0.61 m

4.20 m

VD Bijgebouw

